

# Paint Removing Process



# PAINT REMOVING

## *Necessity of paint remover*

- *What is paint remover ?*
- *Ideal status after removed*

## *How to handle paint remover*

- *How to use paint remover ?*
- *Necessary equipment*

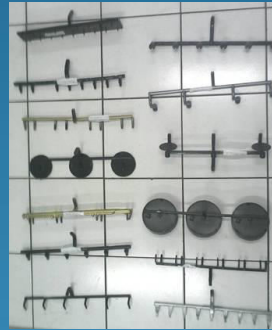
# □ *What is paint remover ?*

## 1. Paint remover ▪ ▪ ▪

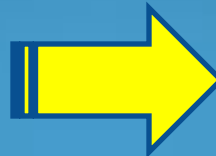
- This chemical is used to remove the paint.

## 2. Reason of use

- In order to reuse the jig



- In order to eliminate the paint defects



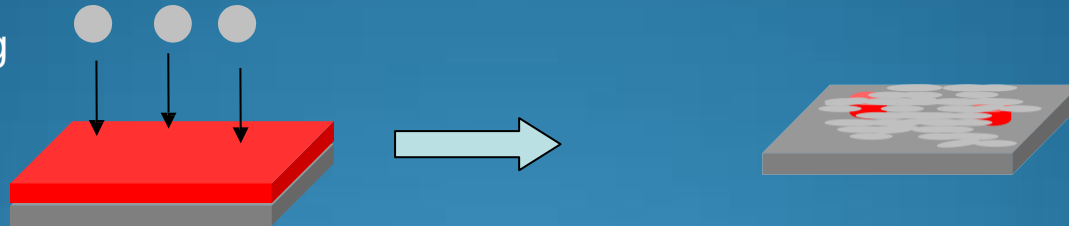
# ❑ *Ideal status after removed*

Ideal



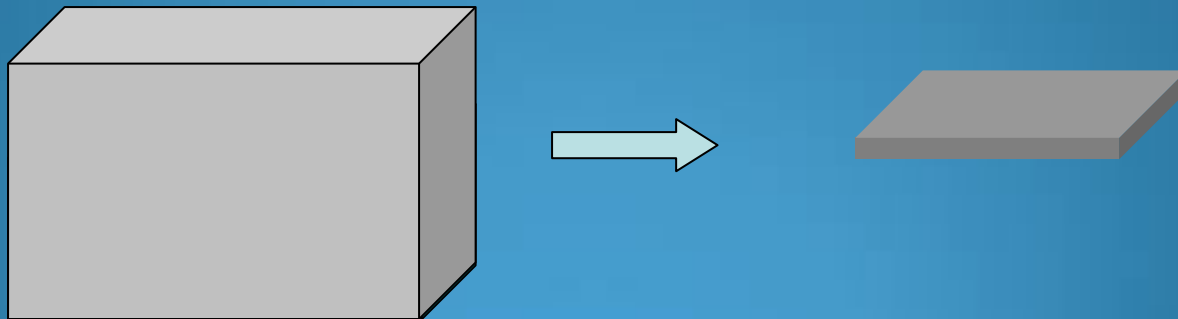
Without damaging the jig, only remove the paint No residue paint

Shot Blasting



Damaging the jig, in some case remaining the paint

Paint Removing



You can remove the paint without damaging the jig. By dipping the liquid, paint residue is less.

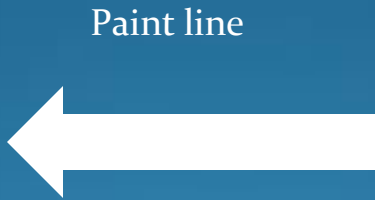
# □ How to use paint remover ?



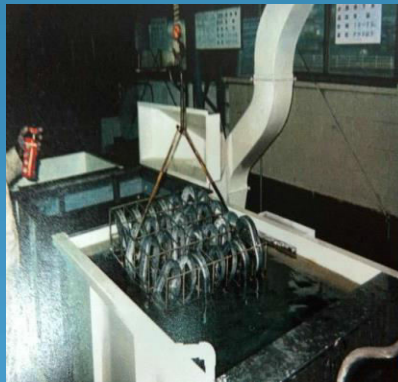
Sticking of the paint.



Dip in the remover tank.



Paint line



Dip in the water tank. Move to up and down.



Drying the parts.



Blow away the residue of paint by high pressure water.

## ❑ *How to use paint remover ?*



The paint remover is dangerous.

Because it is strong acid, please use with caution.

When you use it, we recommend wearing above equipments

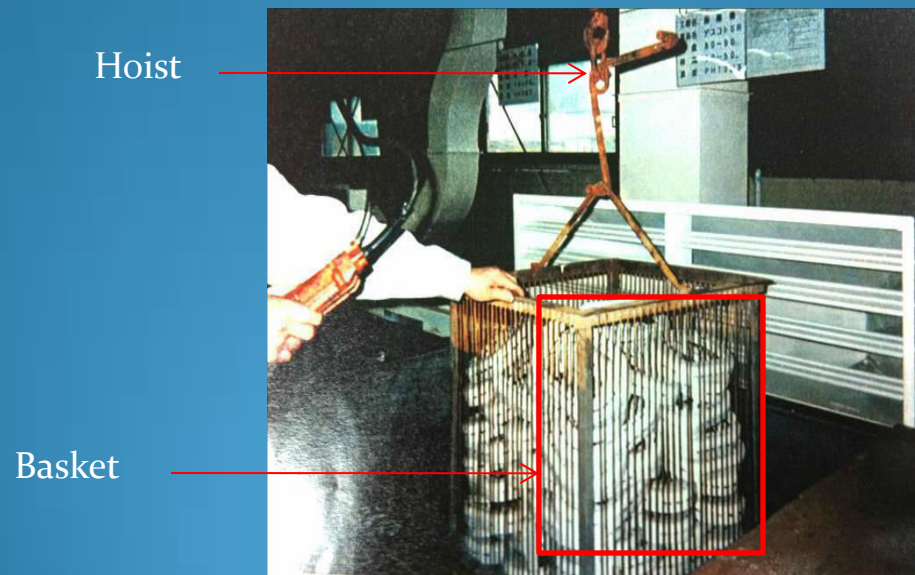
## □ Necessary equipment



Ventilation duct



Remover tank & washing tank



Hoist

Basket